

Abrasive Cutting Underwater and in Tunnel Boring Machines

in co-operation with



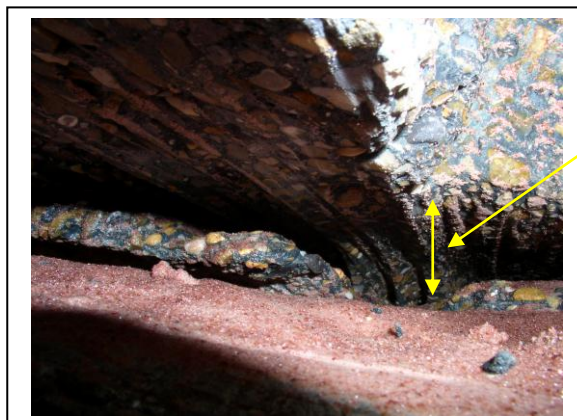
cutting of concrete in a tunnel boring machine

WASS - System

(WasserAbrasiveSuspensions Schneidverfahren) is an abrasive cutting system for cutting of concrete and steel, above and underwater as well as for cutting in nuclear power plants and tunnel boring machines.

Technical Datas

cutting pressure up to 1500 bar
water flow 8-10 ltr./min
abrasive (grit) consumption 1,3 kg/min
cutting speed in steel is approx.:
50 mm thickness = 40 mm/min
180 mm thickness = 15 mm/min



The length to be cut was from 250° till 110°.
The height to be cut was approx. 5 cm
The depth to be cut was approx. 110 cm

The nozzles were mounted on top of the cutter head. The hose were connected to the tunnel pressure wall.

